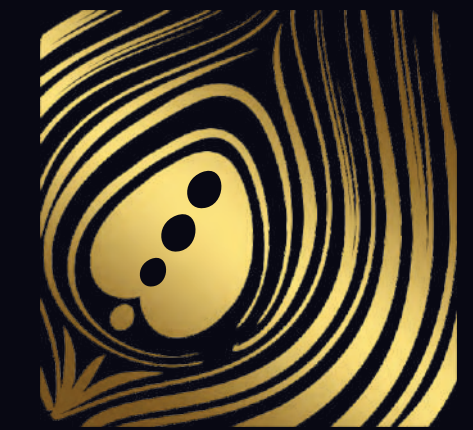
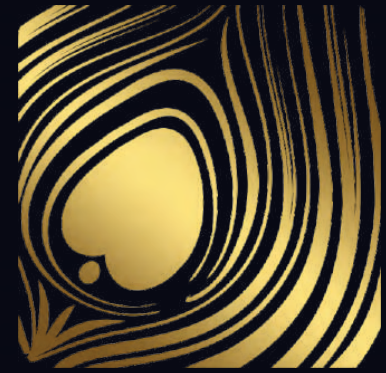


॥पंचशील॥
Group



MOHAN MORARI
residency

2 BHK Higher Quality of Living...



MOHAN MORARI
residency

There is no other better place in the world,
than being in the comfort of our homes.
Home is where we learn the first lessons in life.

The unity, love, togetherness all comes from a home.
Home is the base for every individual and we should
thank God for being blessed with a lovable home.

॥पंचशील॥
Group



DEVELOPERS

॥पंचशील॥
Group

ARCHITECT



STRUCTURAL CONSULTANT



YASHVI CONSTRUCTION

Contact: +91 77780 44455
Email: jpsah71@gmail.com
Web: panchshilgroup.com

॥पंचशील॥ Group

- FLOORING

Drawing Room : 2' x 2' branded vitrified flooring tiles with skirting
Living Room : 2'x2' branded vitrified flooring tiles with skirting
Kitchen : 2'x2' branded vitrified flooring tiles with skirting
Kitchen Yard : Polished kota stones
Bedrooms : 2'x2' vitrified tiles
Parking : Designer tiles / kota stone / pavit / Ug tank & Oh tank - glazed tiles
Staircase : Polished kota stone / granite marble with anti skid grooves

- KITCHEN

- Granite platform
- Stainless steel sink
- 15 AMP points for refrigerator

- BATH ROOM & W.C.

- Ceramic tiles flooring up to lintel level
- Colored glazed tiles
- Concealed plumbing with jaguar or equivalent fittings & designer accessories
- Superior sanitary ware
- Wall hung w.c in all bath rooms

- ELECTRIFICATION

- 3 phase concealed ISI fire resistant copper wiring with anchor roma or equivalent modular switches
- Havells or equivalent distribution board with MCB & ELCB

- SPECIAL NOTES

- The developer reserves the right to change, amend plans and specification in the projects. Such changes would be binding to all the members.
- Change in external elevation shall not be permitted.
- All the govt. / semi govt. charges like stamp duty, reg. charge, GST, or any other duties etc shall be born by the purchaser.
- Legal expenses, electricity connection charges, advance maintenance will be extra.
- This brochure is just for easy presentation of the project and should not be treated as a legal documents.

- DOORS

- 35 mm thick decorative main door and other branded SS fittings
- 32 mm thick bedroom flush door with laminated and other branded SS fittings in wood frames
- Granite / marble door frame and water proof doors for bathrooms / wash rooms

- WINDOWS

- Aluminum anodized sliding window with marble / granite revel

- WALL FINISH

- Internal smooth plaster with putty finish and external double coat plaster with 100% acrylic paint

- TERRACE

- China mosaic over water proof coat on 3" thick brickbat concrete for heat treatment

- TERMITE TREATMENT

- Anti termite treatment done by standard materials to complete area

- STRUCTURE

- Earth - quake resistant R.C.C. frame structure

- AMENITIES

- Attractive entrance foyer

- LIFT

- Two automatic branded lifts

- ECO FRIENDLY FEATURES

- Rain water harvesting

Welcome to
MOHAN MORARI
Residency
lavishness life!

॥पंचशील॥
Group



Every wondered,
why we call it a
DREAM HOME ?
It 's because this
is where our soul
feels at home, not
our mind.

A wonderful way
of living

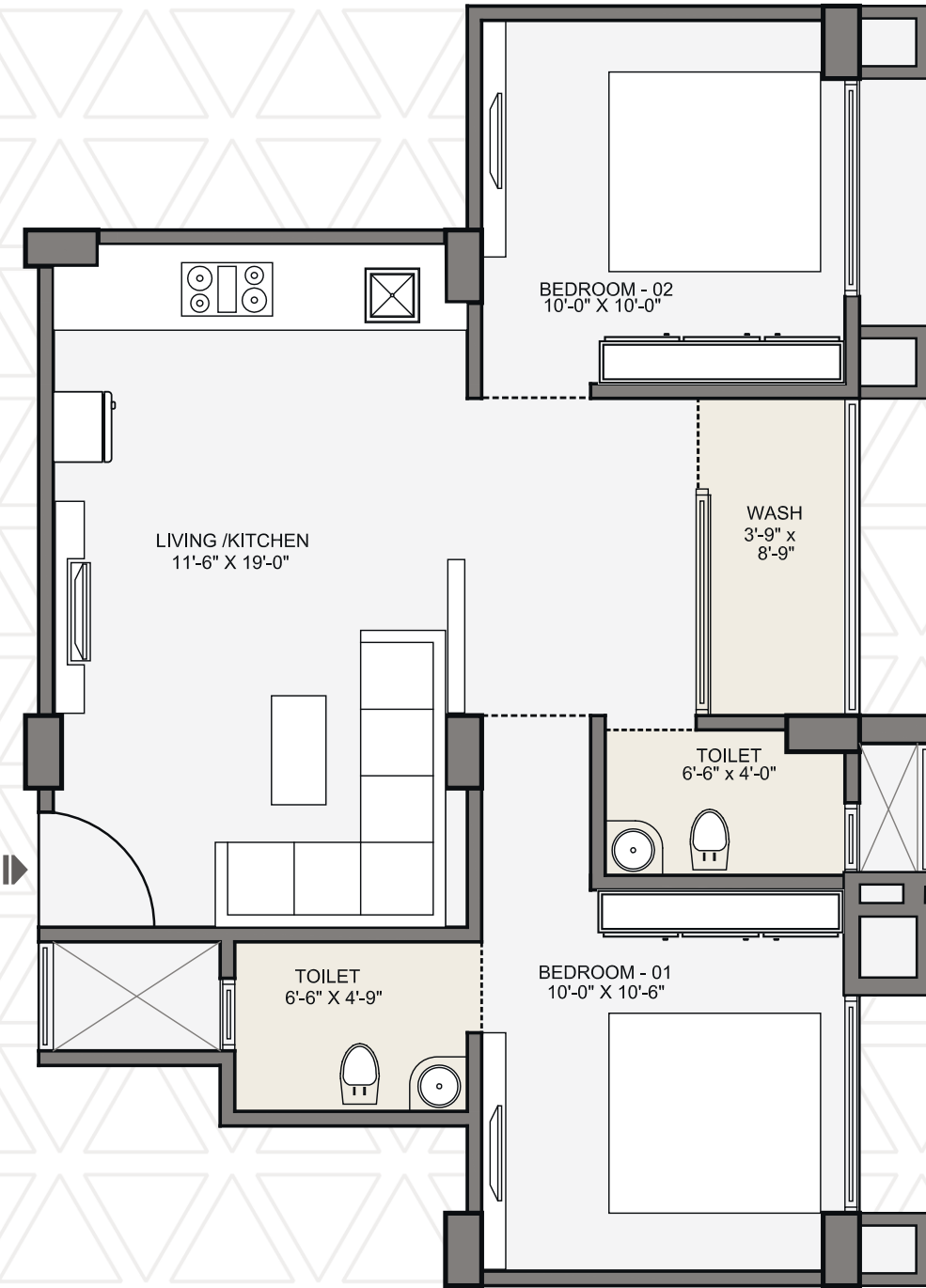


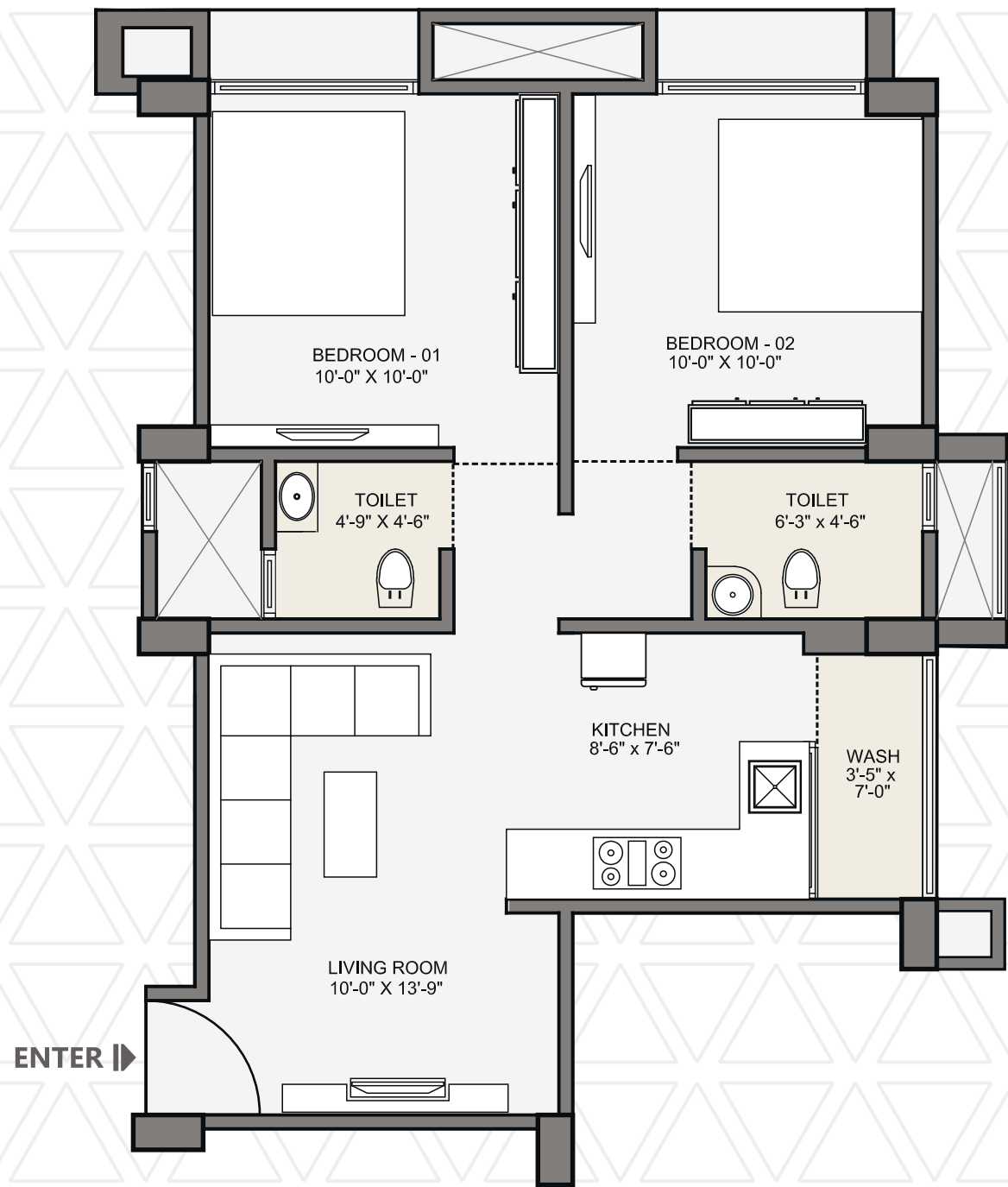
These massive bedrooms will spoil you with unparalleled comfort and panoramic views.



UNIT PLAN
108

ENTER →



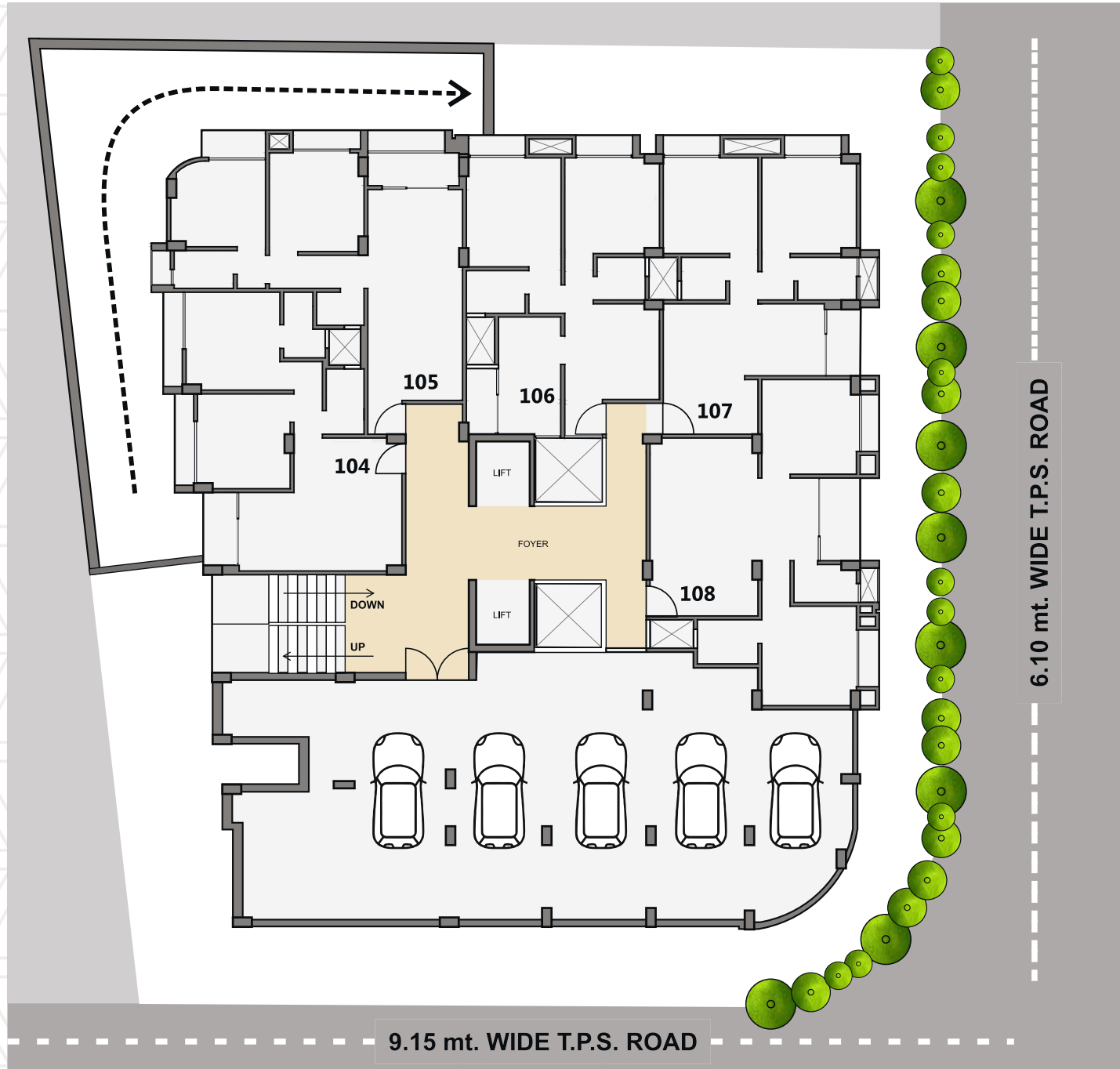


UNIT PLAN
107

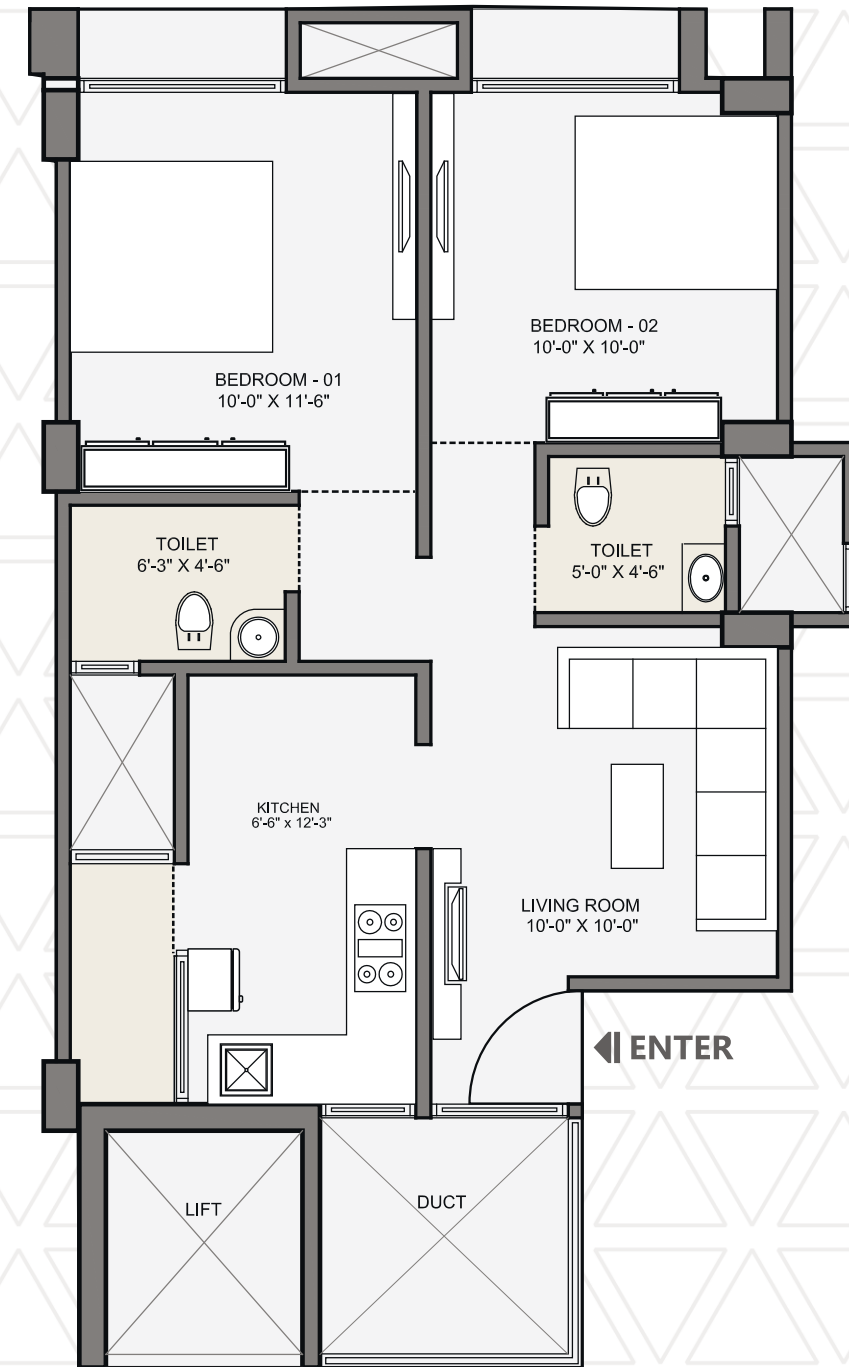




GROUND FLOOR



UNIT PLAN
106

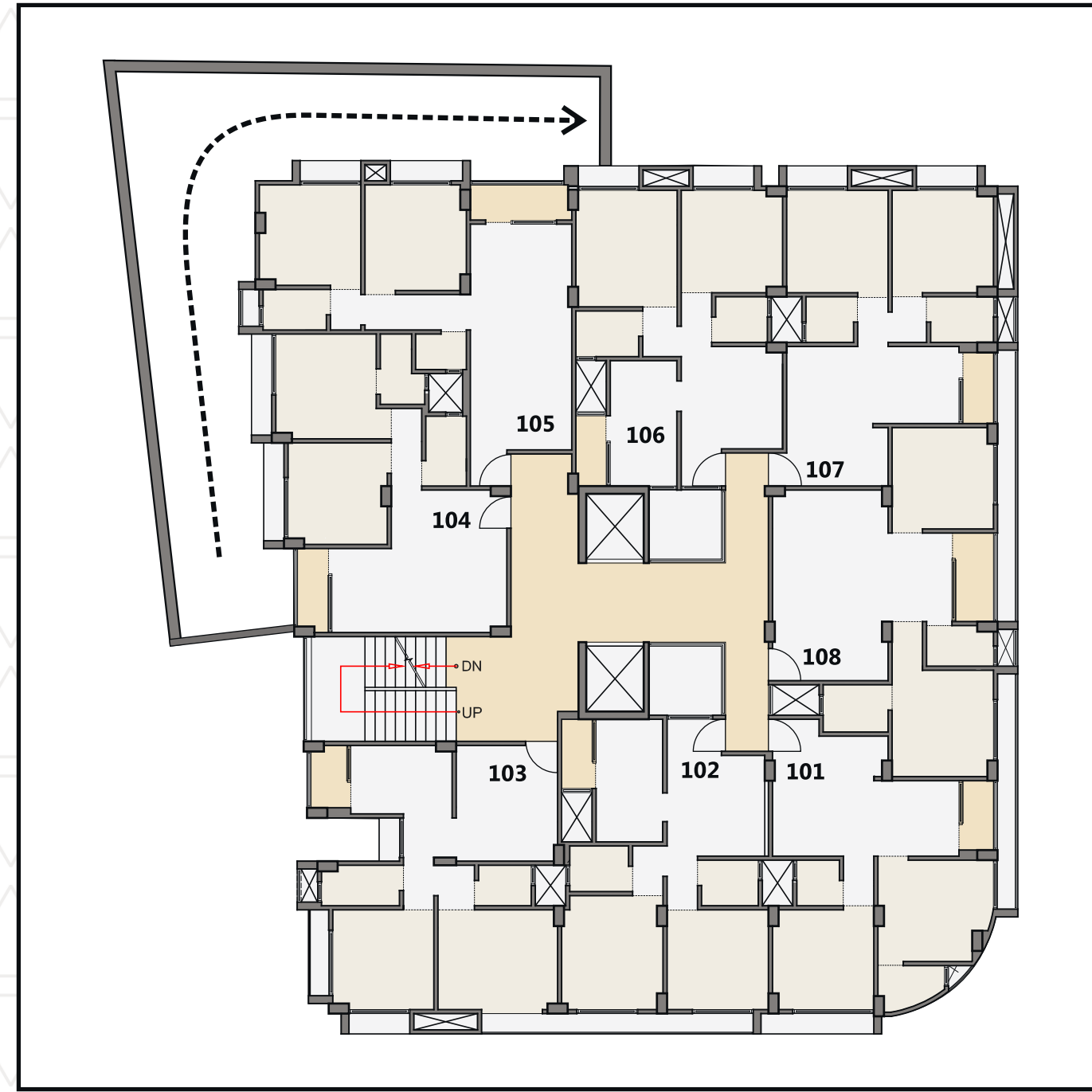




UNIT PLAN
105



TYPICAL FLOOR



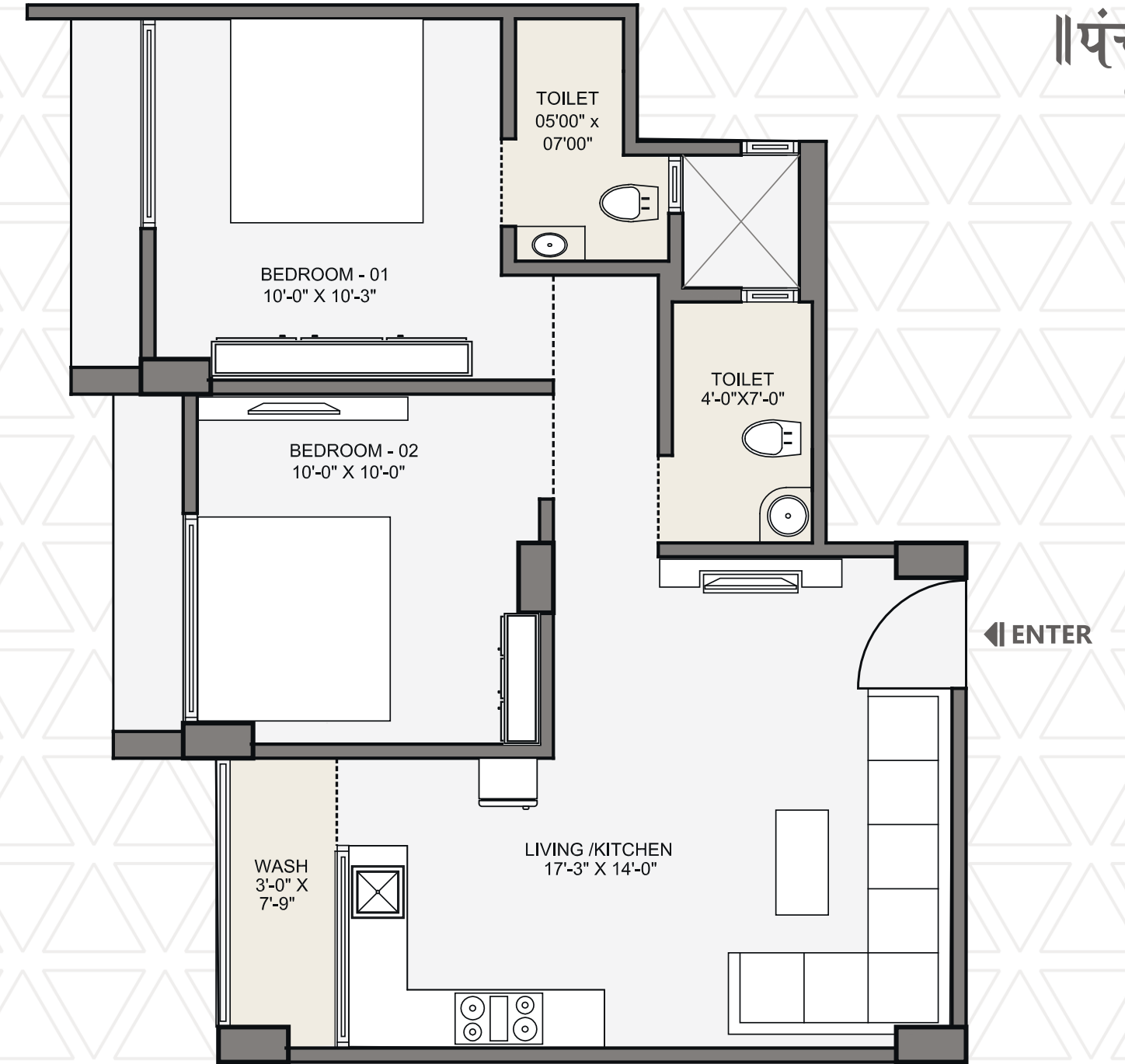
More than an **abode**.
It' s **splendour** redefined.



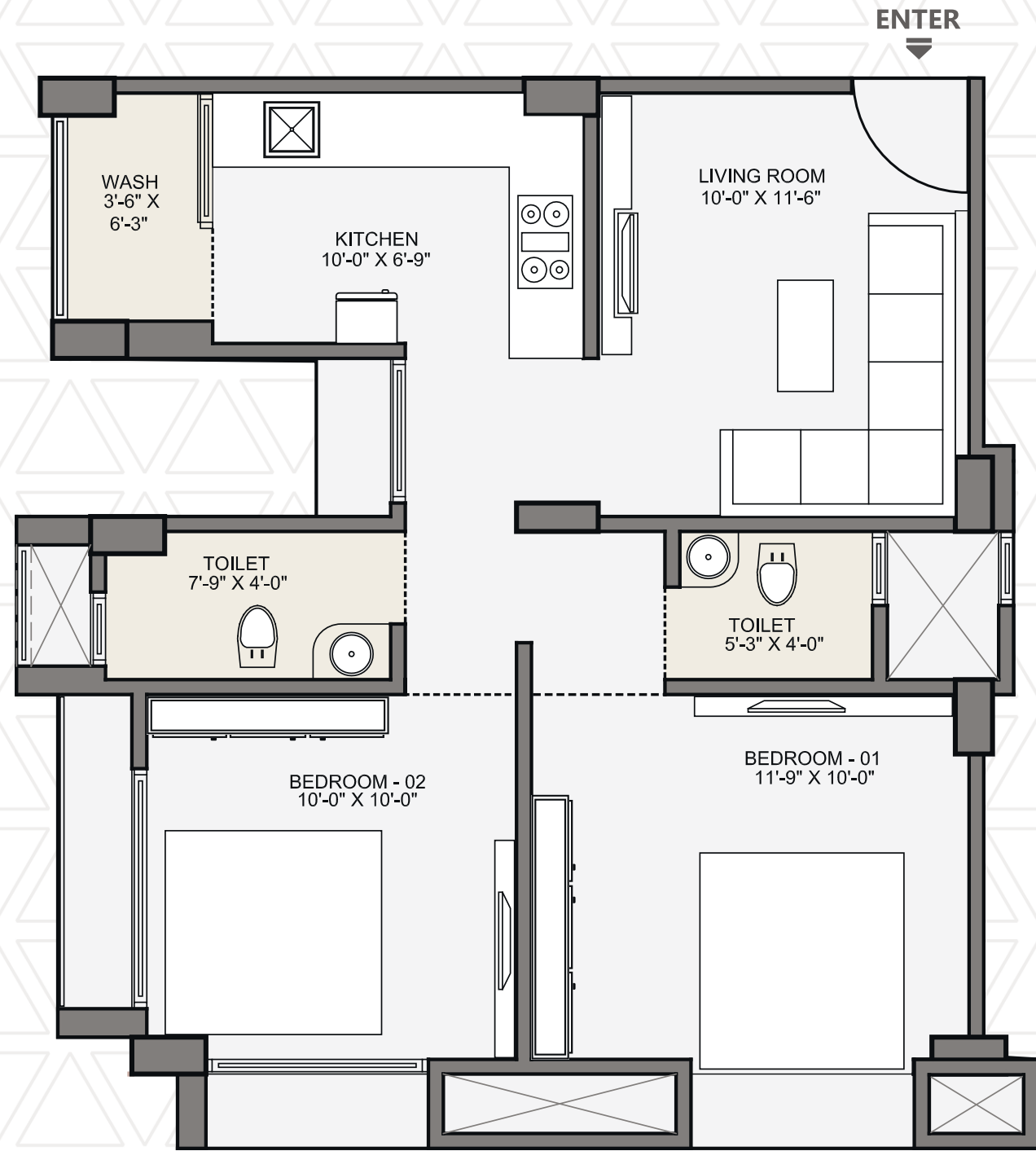
We orientation is
p u r p o s e
d e s i g n e d t o
e n s u r e
p a n o r a m i c
v i e w s , a n d p l e n t y
o f s u n l i g h t a n d
v e n t i l a t i o n i n
y o u r h o m e .



UNIT PLAN
104



॥पंचशील॥
Group



UNIT PLAN
103

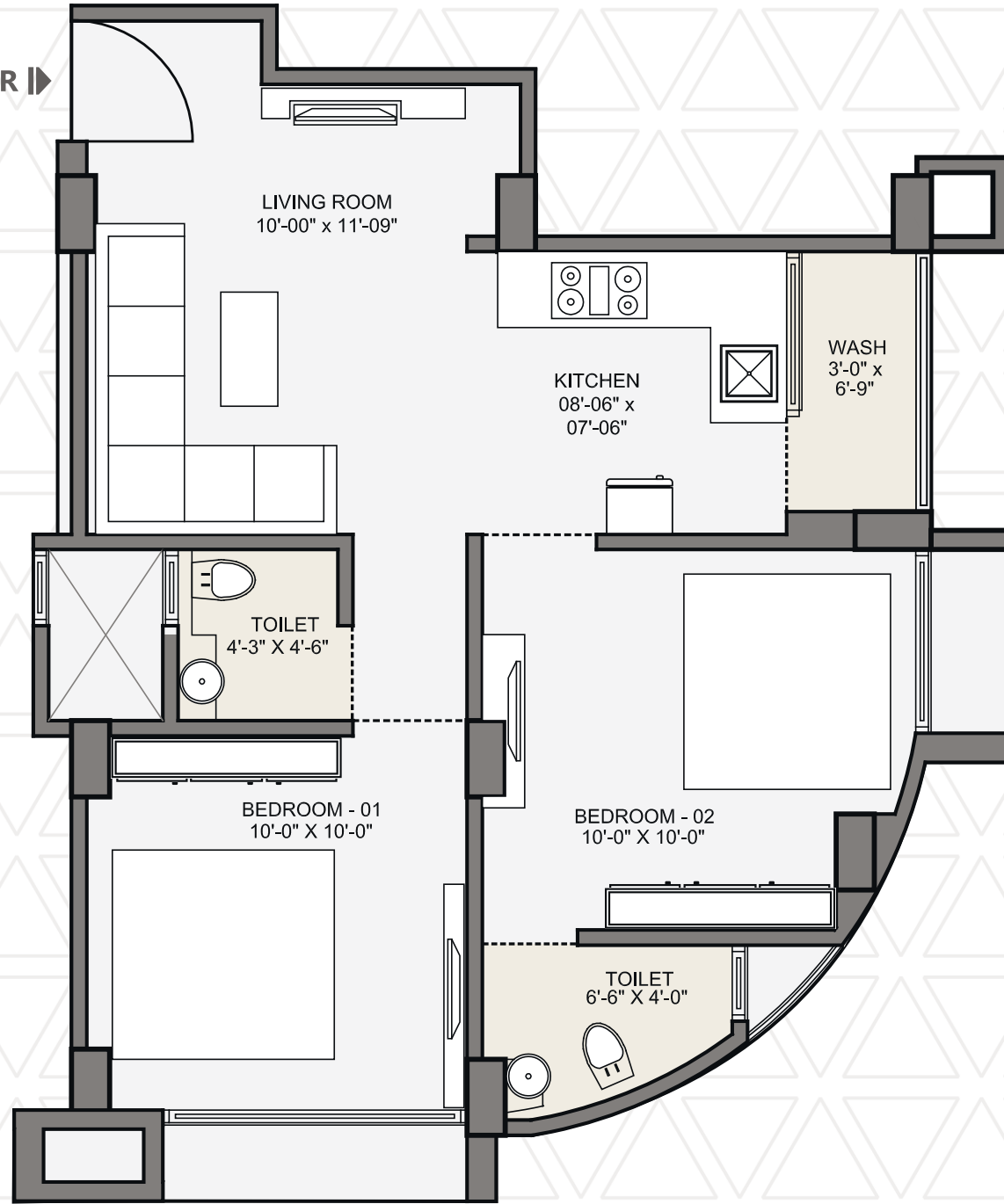


Make **lavishness**
a way of life!

॥पंचशील॥
Group

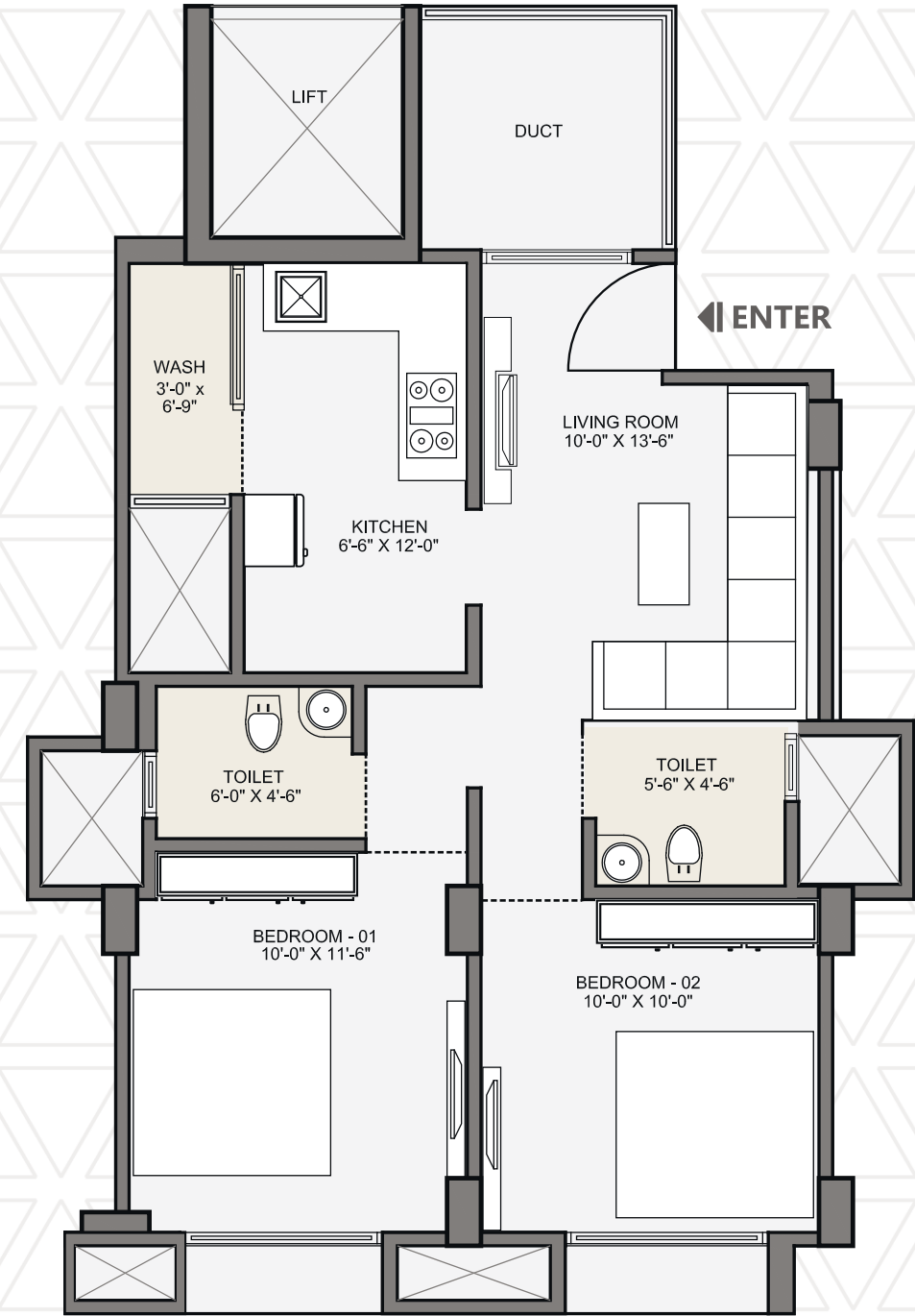
The large windows invite the beauty of the outdoors to seamlessly fuse with the indoors.

ENTER ▶



UNIT PLAN
101

◀ ENTER



UNIT PLAN
102